

# allPIXA evo 10k / 15k CXP

## Line Scan Camera with CoaXPress Interface

High speed CMOS line scan camera with trilinear sensor



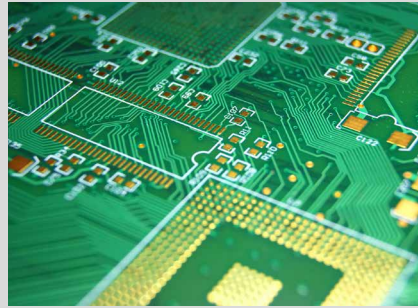
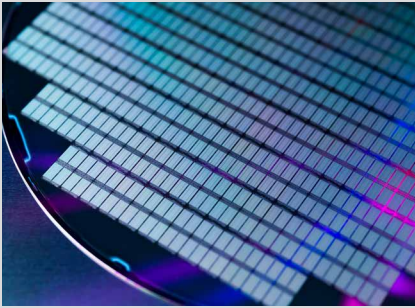
The allPIXA evo CXP cameras with 4 x CoaXPress interface provide the full speed of the 10k and 15k CMOS sensors: up to 68.4 kHz are possible with mono or true color RGB. Featured with line and frame trigger options, variable encoder input and color conversion possibilities, the allPIXA evo CXP is the best choice for all high-resolution web and print inspection applications demanding for high speed. For easy integration, the allPIXA evo CXP comes with the intuitive graphical tool GCT for Windows and Linux, which works with all GenICam compliant CXP frame grabbers.

### CAMERA OVERVIEW:

- ▶ CMOS line scan sensor with 10240 or 15360 pixels
- ▶ 4x CoaXPress (CXP-12) interface
- ▶ True RGB color with excellent signal-to-noise-ratio
- ▶ High speed: Up to 68 kHz line frequency with mono or full RGB
- ▶ Supports PoCXP (Power over CoaXPress).
- ▶ Fully compatible with CoaxPress 2.0 standard
- ▶ SDK and graphical tool GCT for Windows and Linux

### FEATURES:

- ▶ True RGB color or fast mono
- ▶ Mono camera with up to 3 x TDI (FPGA) in full speed
- ▶ High-precision positioning of the optical center based on exact housing references
- ▶ Frame and line trigger options including variable encoder input
- ▶ Color correction matrix for optimized color image representation
- ▶ Continuous white balancing
- ▶ Precise multi-camera synchronization
- ▶ Multi-Flash function for capturing multiple images in one pass with various lighting conditions

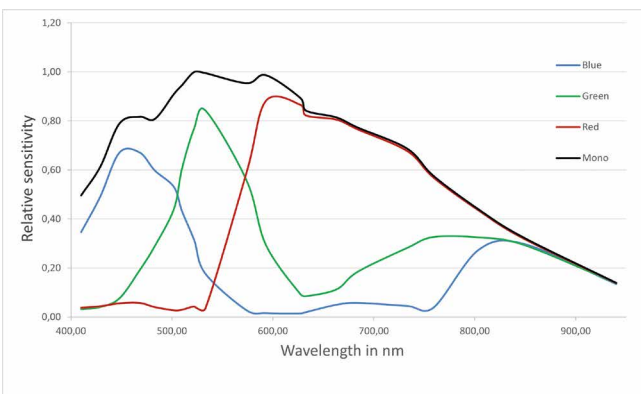


- APPLICATIONS:**
- Flat Panel Display Inspection
  - Printed Circuit Board Inspection
  - High-resolution Document Scanning
  - Wafer and Semiconductor Inspection
  - Print and Label Inspection
  - Web and Foil Inspection
  - High Quality Surface Inspection
  - General Machine Vision

**SPECIFICATIONS:**

Features	allPIXA evo 15k CXP	allPIXA evo 10k CXP
Sensor	Trilinear CMOS line scan sensor for color or mono	
Number of pixels	15360 pixels	10240 pixels
Active pixel size	5.6 µm x 5.6 µm	
Output	4 x CoaXPress 2.0	
Max. line rate color	15360 x 3 pixels: up to 68.4 kHz	10240 x 3 pixels: up to 68.4 kHz
Max. line rate mono	15360 x 1 pixels up to 68.4 kHz	10240 x 1 pixels up to 68.4 kHz
Max. line rate in ROI mode	up to 68.4 kHz	
Data format	3 x 8/10/12 Bit color or 1 x 8/10/12 Bit mono mode	
TDI options	Only for mono: 3 x TDI (FPGA processing)	
Interfaces	4 x CoaXPress 2.0 with micro-BNC connectors External I/O (DSUB) CoaXPress connections switchable 1, 2 or 4	
Power supply	12 – 24V DC ± 20% (Hirose) Power over CoaXPress: PoCXP requires min. 2 x CXP connectors	
Trigger mode	Free run / External trigger / Line trigger / Frame trigger	
Operating temperature	0° - 60°C (housing temperature)	
Dimensions / Lens mount	102 x 100 x 87 mm (W x H x D) / M95 x 1,0 mm	102 x 76 x 87 mm (W x H x D) / M72 x 0,75 mm
Certification	CE; RoHS	

**SPECTRAL SENSITIVITY:**



**Customized Cameras and Imaging Systems:**  
 Chromasens offers fully customized light, camera and scanner solutions. All systems are 100% adaptable to customer requirements.

# allPIXA evo 10k / 15k DXGE

## Line Scan Cameras

Excellent image quality with ultra-high speed via 10 GigE



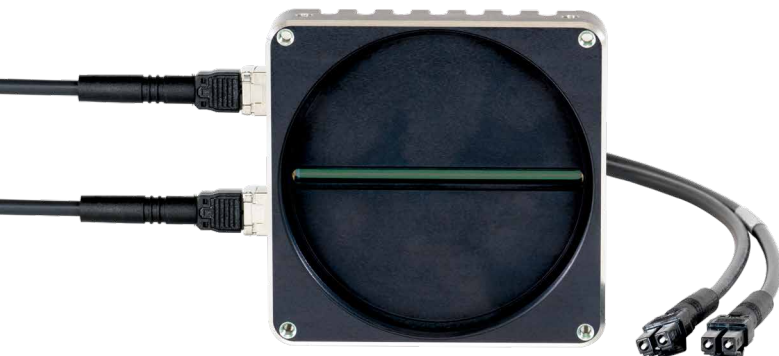
The Dual 10 GigE interface allows fast RGB color scanning with line rates up to 68 kHz for 10k, up to 49 kHz for 15k sensor. Featured with line and frame trigger options, variable encoder input and color conversion possibilities the allPIXA evo DXGE is the best choice for all high-resolution web and print inspection applications. For easy integration, the allPIXA evo DXGE comes with an intuitive graphical tool and an SDK for camera control and image capture for Windows and Linux. Our SDK with real time kernel for Windows ensures completely reliable image data transfer, even for high data rates.

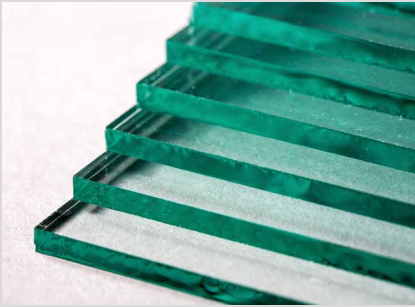
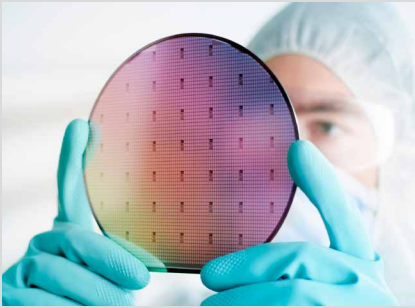
### CAMERA OVERVIEW

- ▶ 10k and 15k line scan camera with standard Single/ Dual 10 GigE interface
- ▶ True RGB color with excellent signal-to-noise-ratio
- ▶ High speed: up to 69 kHz line frequency (ROI mode)
- ▶ Optical connectors (SFP+) for long fibre cables far beyond 100 m
- ▶ SDK with real time kernel to ensure reliable data transfer under Windows
- ▶ Economical system by using cost effective network interface cards for 10 GigE

### FEATURES

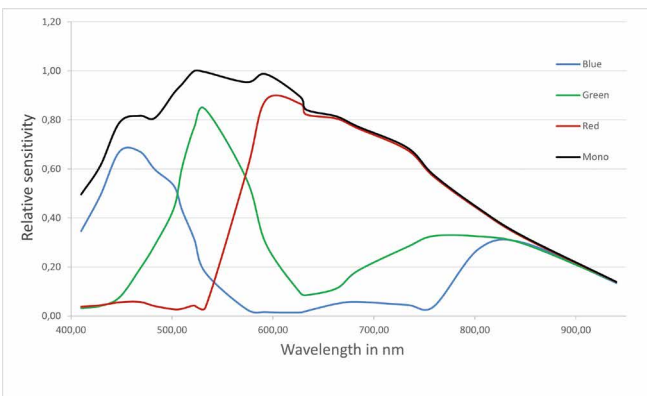
- ▶ CMOS color line scan sensors for true RGB color and fast mono
- ▶ Mono camera with 3 x TDI
- ▶ Frame and line trigger options including variable encoder input
- ▶ Color correction matrix for optimized color image representation
- ▶ Continuous white balancing
- ▶ Precise multi-camera synchronization
- ▶ Multi-Flash function for capturing multiple images in one pass with various lighting conditions
- ▶ Chromasens SDK with real time kernel for reliable high speed image capture under Windows





- APPLICATIONS:**
- Flat Panel Display
  - Printed Circuit Board
  - High-resolution Document Scanning
  - Print
  - Web
  - Quality Control
  - Sorting Processes
  - High Quality Surface
  - Food
  - Semiconductor
  - General machine vision

**SPECTRAL SENSITIVITY:**



**Customized Cameras and Imaging Systems:**  
 Chromasens offers fully customized light, camera and scanner solutions. All systems are 100% adaptable to customer requirements.

**SPECIFICATIONS:**

<b>Sensor</b>	Trilinear CMOS line scan sensor for color or mono
<b>Number of pixels</b>	10240 pixels 15360 pixels
<b>Active pixel size</b>	5.6 µm x 5.6 µm
<b>Output</b>	Single/Dual 10 GigE GigE Vision® 2.0 compliant
<b>Max. line rate color</b>	RGB: 10240 x 3 pixels: up to 40 kHz (Single)* RGB: 10240 x 3 pixels: up to 68 kHz (Dual)* RGB: 15360 x 3 pixels: up to 26 kHz (Single)* RGB: 15360 x 3 pixels: up to 49 kHz (Dual)*
<b>Max. line rate mono</b>	Mono: 10240 x1 pixels: up to 69 kHz (Single and Dual)* Mono: 15360 x1 pixels: up to 69 kHz (Single and Dual)*
<b>Max. line rate in ROI mode</b>	RGB and mono: up to 69 kHz <sup>1</sup>
<b>Data format</b>	3 x 8/10/12 Bit color or 1 x 8/10/12 Bit mono mode
<b>TDI</b>	up to 3 x TDI mode (TDI camera model - mono)
<b>Interfaces</b>	2 x SFP+ External I/O (DSUB)
<b>Power supply</b>	12 – 24V DC ± 20%
<b>Trigger mode</b>	Free run / External trigger Line trigger / Frame trigger
<b>Operating Temperature</b>	0° - 60°C (housing temperature)
<b>Dimensions / Lens mount</b>	10K: 102 x 76 x 82 mm (W x H x D) / M72 x 0,75 mm 15K: 102 x 101 x 82 mm (W x H x D) / M95 x 1mm
<b>Certifications</b>	CE; RoHS

\*With Chromasens SDK. For more information see allPIXA evo manual.