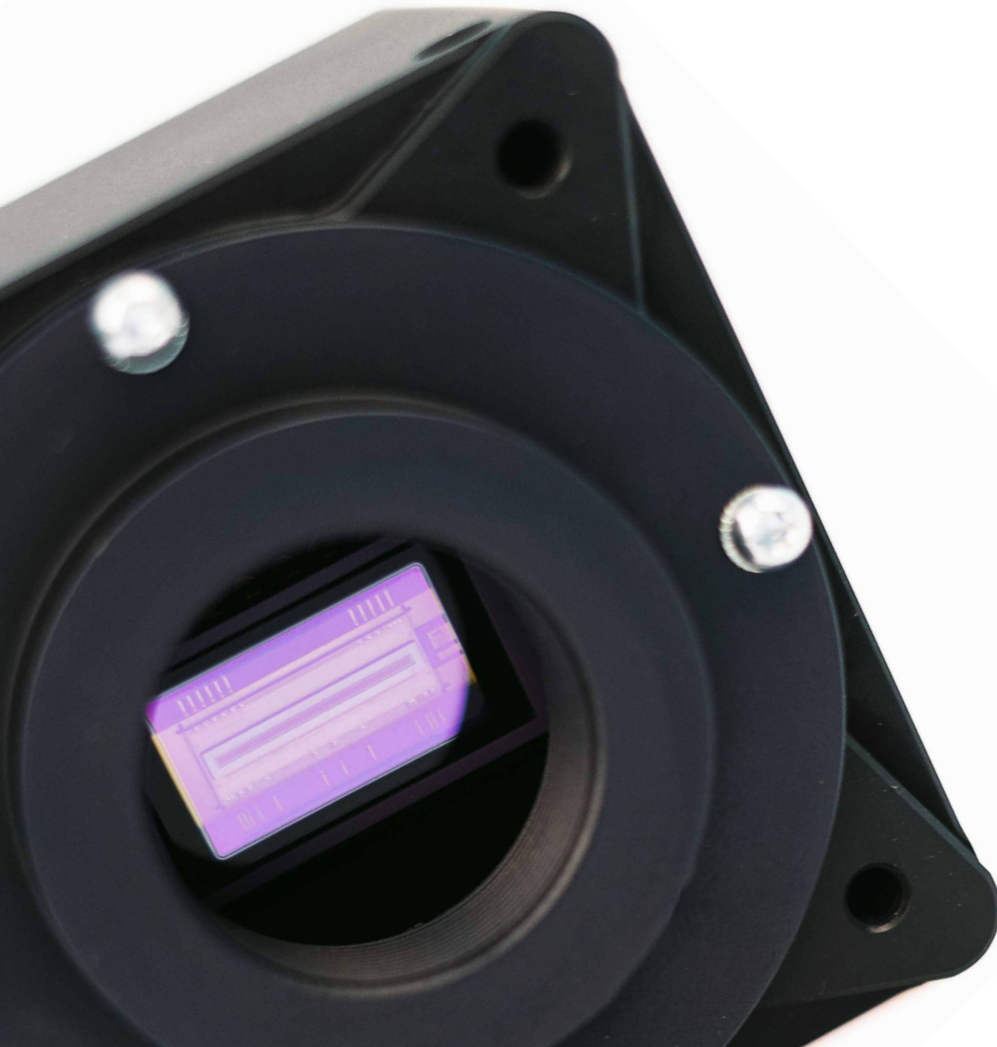




allPIXA SWIR

**SHORTWAVE INFRARED
LINE SCAN CAMERA SERIES**
512 / 1k / SWIR

**FAST
NON-VISIBLE
IMAGING**





allPIXA SWIR 512 / 1k

Line Scan Camera with GigE Vision Interface

Fast. Non-visible. Imaging.



This high-performance shortwave infrared (SWIR) line scan camera offers exceptional imaging capabilities for machine vision applications requiring non-visible material analysis in high-speed inspection. It offers an uncooled state-of-the-art InGaAs sensor with 512 or 1k resolution and 25x25 or 12.5x12.5 μm pixel size for high resolution, high sensitivity and a line rate of 40 kHz. The GenICam compliant GigE Vision interface allows an easy integration into existing machine vision systems.

CAMERA OVERVIEW:

- ▶ Line Scan InGaAs sensor with a resolution of 512 pixels (25 μm x 25 μm pixel size) or 1024 pixels (12.5 μm x 12.5 μm pixel size)
- ▶ SWIR spectrum: From 950 to 1700 nm
- ▶ High speed: Up to 40 kHz line rate
- ▶ GigE Vision or CameraLink interface
- ▶ Internal FPGA for image pre-processing
- ▶ Compact size: 62 x 62 x 52 mm


FEATURES:

- ▶ Horizontal binning to increase responsivity
- ▶ 8, 10 or 12 Bits per pixel
- ▶ Internal DSNU, PRNU, and TRC LUT or gamma correction
- ▶ Frequency converter for external line trigger
- ▶ Adjustable CameraLink clock
- ▶ Tested with many popular frame grabbers and GenICam SDKs
- ▶ Free Chromasens software tools and SDK available for easy setup and seamless integration

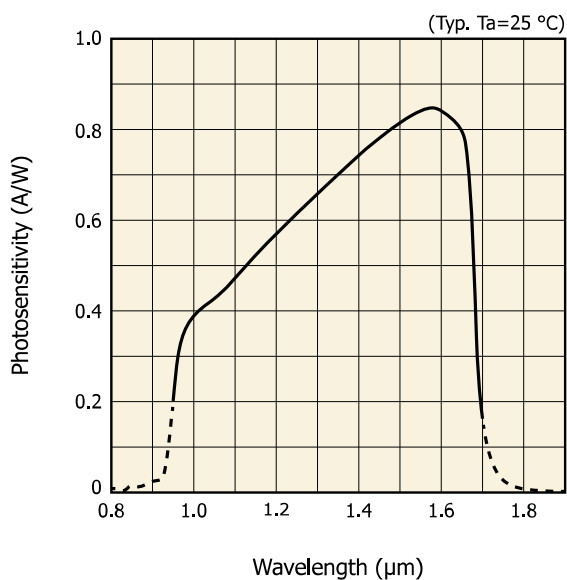
TYPICAL APPLICATIONS:

- Sorting
- Recycling
- Food Inspection
- Moisture Detection
- Semiconductor Inspection
- Solar Panel Inspection
- Chemical Identification
- Pharma / Medical / Biomedical
- Anti-counterfeiting
- Content Inspection (Opaque Containers)
- Coating and Surface Inspection

SPECIFICATIONS:

allPIXA SWIR	
Interface	
Sensor	Linear InGaAs (uncooled)
Resolution	512 x 1 pixels / 1024 x 1 pixels
Active pixel size	25 μm x 25 μm (512) / 12.5 μm x 12.5 μm (1k)
Spectral band	950 nm to 1700 nm
Image Circle	12.8 mm
Lens Mount	C-Mount (others on request)
Order Codes	GigE: CP000700-IR-01K-GE-001 CP000700-IR-512-GE-001
Max. line rate	40 kHz
Camera link pixel clock	32.5 / 65 MHz
Sync	External trigger / Software trigger signal / Free run
Data format	8, 10, 12 Bit
Digital inputs	3 x RS422 (only GigE version)
Digital outputs	2 x RS422 (only GigE version)
Power supply	12 to 24 V DC \pm 10%
Power consumption	6 W
Dimensions	L=62 mm, H=62 mm, D=52 mm
Weight	170 g
Operating temperature	-10°C ... +50°C
Protection Class	IP40
Certifications	CE, RoHS, REACH

SPECTRAL SENSITIVITY:



allPIXA SWIR
512 / 1k
GigE Vision

