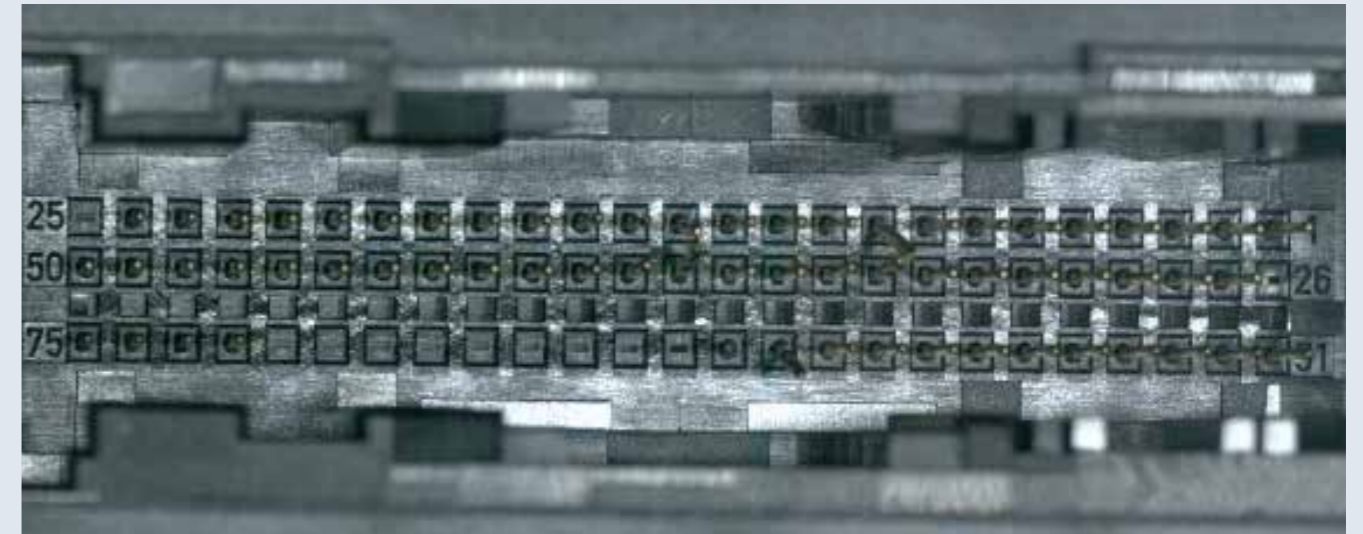


Corona II Coaxial Lighting

 Chromasens introduces two coaxial modules extending the Corona II family

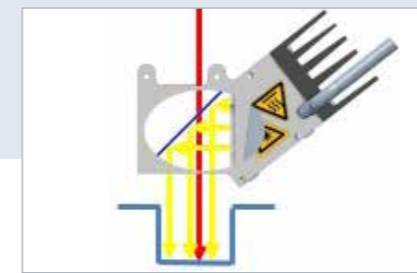


Highlights

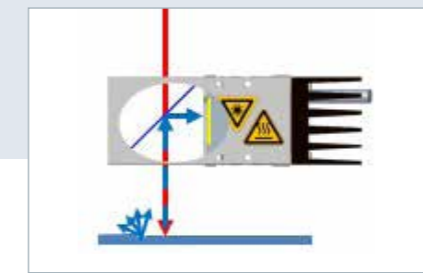
- ▶ Available for Corona modules up to 680 mm. High quality anti-reflection coating and thin glasses to reduce ghost images
- ▶ Option: Protection glasses for dusty environments

Setups

Coaxial light illuminates the objects in viewing direction of the camera. Two coaxial light modules are available for selecting the most suitable version for your application: Bright field illumination · Dark field illumination



Dark field setup for pin inspection



Bright field setup for wafer inspection

Coaxial modules for dark field illumination:

Getting high light intensity into deep object grooves: Typical examples are automotive plug connectors with increasing pin counts and complexity. Many of them are equipped with very deep connector housings. With the new Chromasens coaxial module for dark field illumination, it is now possible to bring directed light into the depth of the component, free of shadows without affecting the camera perspective.

Coaxial modules for bright field illumination:

Diffuse light for flat objects: Bright field lighting systems are the first choice for applications with vertical viewing angle and with telecentric lenses. The coaxial bright field module from Chromasens is perfect for such applications and is available with length of up to 680 mm. Optional protection glasses are offered for use in dusty environments. The performance values of the Corona modules are fully maintained.

Applications:

- ▶ 3D inspection of connectors
- ▶ Type: Dark field version
- ▶ Approach: Getting light into deep objects

Application:





- ▶ Wafer inspection
- ▶ Type: Bright field version
- ▶ Approach: Perpendicular camera view

Specifications:

Corona II	Bright field version	Dark field version
Length	up to 680 mm (in steps of 170 mm)	
LED colours	Red, Green, Blue Cool White (5500 Kelvin), Warm white (3500 Kelvin)	
Focusing options		B-Focus 95 mm C-Focus 190
Cooling options	Passive cooling (10x50 mm or 40x50 mm) Fan cooling Water cooling	
Protection screens	No protection screen One screen (top side/camera) One screen (bottom/object)* Two protection screens* (*only on request)	CXN CXT CXB CXS

THE CHROMASENS CORONA II FAMILY:

Four lighting concepts:

-  **TOP LIGHT DARK FIELD**
-  **BRIGHT FIELD BACK LIGHTING**
-  **COAXIAL LIGHTING**
-  **TUBE LIGHTING**

Same part of the wafer illuminated with two different types of illumination:



Dark field illumination
Dust particles on the wafer are visible



Coaxial illumination
Objects on the wafer are visible