

allPIXA evo 10k / 15k CXP

Color Line Scan Camera with CoaXPress Interface

High speed CMOS camera with tri-linear color sensor featuring TDI options





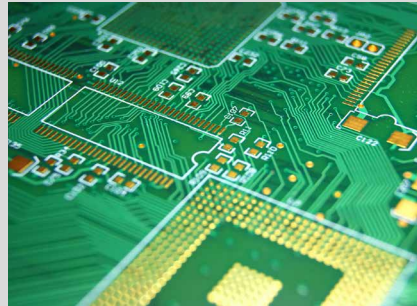

The allPIXA evo cameras with 4 x CoaXPress interface provide the full speed of the 10k and 15k CMOS sensors: up to 68.4 kHz are possible with true color RGB. Featured with line and frame trigger options, variable encoder input and color conversion possibilities, the allPIXA evo is the best choice for all high speed and high-resolution web and print inspection applications. For easy integration, the allPIXA evo comes with the intuitive graphical tool GCT for Windows and Linux, which works with all GenICam compliant CXP frame grabbers.

CAMERA OVERVIEW:

- 10k and 15k color line scan camera with 4 x CoaXPress (CXP-12) Interface
- True RGB color with excellent signal-to-noise-ratio
- High speed: Up to 68 kHz line frequency with full RGB and 15k
- Supports PoCXP (Power over CoaXPress).
- Fully compatible with CoaxPress 2.0 standard
- SDK and graphical tool GCT for Windows and Linux

FEATURES:

- Tri-linear CMOS color line scan sensors for true RGB color and fast mono
- Mono camera with up to 3 x TDI (FPGA) in full speed
- High-precision positioning of the optical center based on exact housing references
- Frame and line trigger options including variable encoder input
- Color correction matrix for optimized color image representation
- Continuous white balancing
- Precise multi-camera synchronization
- Multi-Flash function for multiple image acquisition in one pass

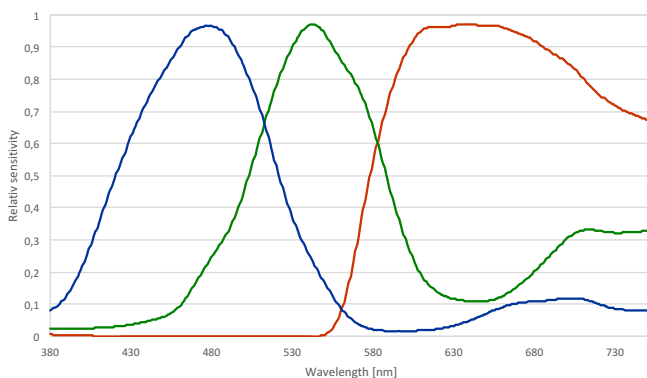


- APPLICATIONS:**
- Flat panel display inspection
 - Printed circuit board inspection
 - High resolution document scanning
 - Wafer and semiconductor inspection
 - Print and label inspection
 - Web and foil inspection
 - High quality surface inspection
 - General machine vision

SPECIFICATIONS:

Features	15K Camera	10K Camera
Sensor	Tri-linear CMOS line scan sensor for color or mono	
Number of pixels	15360 pixels	10240 pixels
Active pixel size	5.6 µm x 5.6 µm	
Output	4 x CoaXPress 2.0	
Max. line rate color (RGB)	3 x 15360 pixels: up to 68.4 kHz	3 x 10240 pixels: up to 68.4 kHz
Max. line rate mono	15360 pixels: up to 68.4 kHz	10240 pixels: up to 68.4 kHz
Max. line rate in ROI mode	up to 68.4 kHz	
Data format	3 x 8/12 Bit color or 1 x 8/12 Bit mono mode	
TDI options	Only for Mono: 3 x TDI (FPGA processing)	
Interfaces	4 x CoaXPress 2.0 with micro-BNC connectors External I/O (DSUB) / USB2.0 (Micro USB) CoaXPress connections switchable 1, 2 or 4	
Power supply	12 – 24V DC ± 20% (Hirose) Power over CoaXPress: PoCXP requires min. 2 x CXP connectors	
Trigger mode	Free run / External trigger / Line trigger / Frame trigger	
Operating Temperature	0° - 60°C (housing temperature)	
Dimensions / Lens mount	102 x 100 x 87 mm (W x H x D) / M95 x 1,0 mm	102 x 76 x 87 mm (W x H x D) / M72 x 0,75 mm
Certifications	CE; FCC compliant; RoHS	

SPECTRAL SENSITIVITY:



Customized Cameras and Imaging Systems:
 Chromasens offers fully customized light, camera and scanner solutions. All systems are 100% adaptable to customer requirements.