

# allPIXA evo 8k DXGE

## Color Line Scan Cameras

High-speed CMOS camera with multi-line color sensor and TDI options



The allPIXA evo 8k offers CMOS performance with CCD image quality. The novel multi-line CMOS sensor features TDI options for color and mono at high speed. Line rates up to 90 kHz for 8k in full color are possible with the fast and cost-efficient Dual 10 GigE interface. With line and frame trigger options, variable encoder input and color conversion possibilities the allPIXA evo 8k is the best choice for all high-speed and high-resolution web and print inspection applications. Filters in the near infrared range enables the recognition of object features in the visible and NIR spectrum with one camera. For easy integration an intuitive graphical tool and a SDK for camera control and high-speed image capture for Windows and Linux are provided.

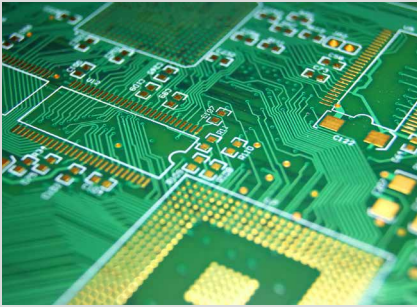
### CAMERA OVERVIEW:

- ▶ allPIXA evo 8k color line scan camera with standard Single/Dual 10 GigE interface
- ▶ TDI options for RGB and mono
- ▶ High speed: up to 3 x 90 kHz line frequency (RGB)
- ▶ Optical connectors (SFP+) for long fibre cables up to 300 m
- ▶ Economical system cost by using cost effective network interface cards for 10 GigE

### FEATURES:

- ▶ CMOS color sensor with 16 lines
- ▶ Full RGB color with 2 x TDI in full speed
- ▶ Mono camera with up to 8 x TDI in full speed
- ▶ NIR pass filter provides additional NIR image
- ▶ Continuous white balancing
- ▶ Precise multi-camera synchronization
- ▶ Chromasens SDK for high-speed image capture
- ▶ Multi-Flash function for multiple image acquisition in one pass

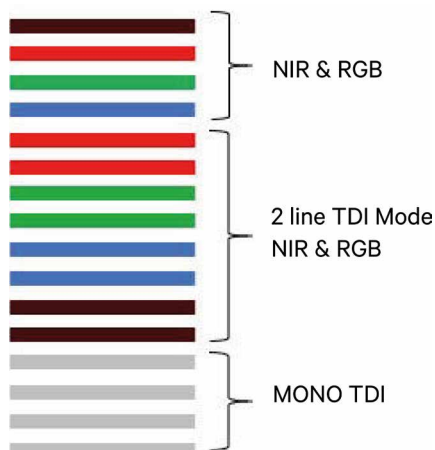
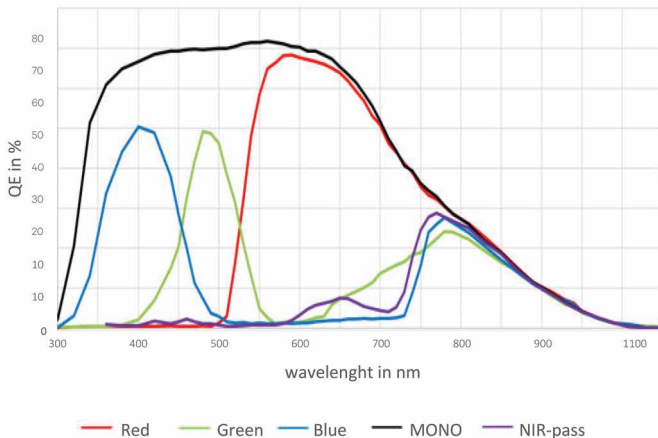




**APPLICATIONS:**

- High-speed Print Inspection
- PCB & AOI
- Wafer Inspection
- Sorting Processes
- High-resolution Surface Inspection
- Food
- Semiconductor
- EV Battery

**SPECTRAL SENSITIVITY:**



**SPECIFICATIONS:**

<b>Sensor</b>	CMOS line scan sensor with 16 lines (RGB, NIR-pass and mono)
<b>Number of pixels</b>	8192 pixels
<b>Active pixel size</b>	5.0 μm x 5.0 μm x 16 lines
<b>Output</b>	Single/Dual 10 GigE GigE Vision® 2.0 compliant
<b>Max. line rate color</b>	RGB: 8192 pixels x 3: up to 50 kHz (Single)* RGB: 8192 pixels x 3: up to 90 kHz (Dual)* RGB+NIR: 8192 pixels x 4: up to 37 kHz (Single)* RGB+NIR: 8192 pixels x 4: up to 68 kHz (Dual)*
<b>Max. line rate mono</b>	Mono: 8192 pixels x 1: up to 100 kHz (Single and Dual)*
<b>Max. line rate in ROI mode</b>	RGB and mono: up to 100 kHz
<b>Data format</b>	3 x 8/10/12 Bit color or 1 x 8/10/12 Bit mono mode or 4 x 8/10/12 Bit RGB + NIR-pass
<b>TDI options color camera</b> <b>TDI options mono camera</b>	color: 2 x TDI / mono: 4 x TDI 8 x TDI
<b>Interfaces</b>	2 x SFP+ (copper and fiber connectors) External I/O (DSUB) / USB2.0 (Micro USB)
<b>Power supply</b>	12 – 24V DC ± 20%
<b>Trigger mode</b>	Free run / External trigger Line trigger / Encoder / Frame trigger
<b>Operating Temperature</b>	0° - 60°C (housing temperature)
<b>Dimensions / Lens mount</b>	102 x 76 x 82 mm (W x H x D) / M72 x 0.75 mm / F-Mount
<b>Certifications</b>	CE; FCC compliant; RoHS

\*With Chromasens SDK. For more information see allPIXA evo manual.

**Customized Cameras and Imaging Systems:**  
Chromasens offers fully customized light, camera and scanner solutions. All systems are 100% adaptable to customer requirements.