

allPIXA evo 10k / 15k DXGE

Line Scan Cameras

Excellent image quality with ultra-high speed via 10 GigE



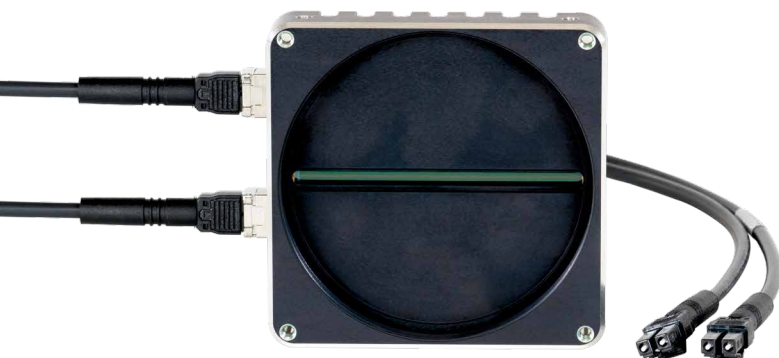
The Dual 10 GigE interface allows fast RGB color scanning with line rates up to 68.4 kHz for 10k, up to 49 kHz for 15k sensor. Featured with line and frame trigger options, variable encoder input and color conversion possibilities the allPIXA evo DXGE is the best choice for all high-resolution web and print inspection applications. For easy integration, the allPIXA evo DXGE comes with an intuitive graphical tool and an SDK for camera control and image capture for Windows and Linux. Our SDK with real time kernel for Windows ensures completely reliable image data transfer, even for high data rates.

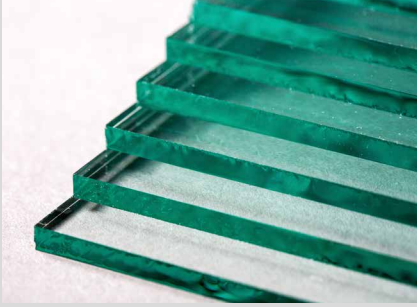
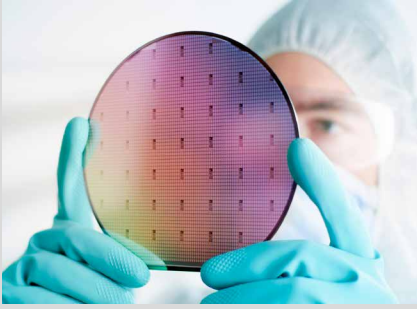
CAMERA OVERVIEW

- ▶ 10k and 15k line scan camera with standard Single/ Dual 10 GigE interface
- ▶ True RGB color with excellent signal-to-noise-ratio
- ▶ High speed: up to 68.4 kHz line frequency (ROI mode)
- ▶ Optical connectors (SFP+) for long fibre cables far beyond 100 m
- ▶ SDK with real time kernel to ensure reliable data transfer under Windows
- ▶ Economical system by using cost effective network interface cards for 10 GigE

FEATURES

- ▶ CMOS color line scan sensors for true RGB color and fast mono
- ▶ Mono camera with 3 x TDI
- ▶ Frame and line trigger options including variable encoder input
- ▶ Color correction matrix for optimized color image representation
- ▶ Continuous white balancing
- ▶ Precise multi-camera synchronization
- ▶ Multi-Flash function for capturing multiple images in one pass with various lighting conditions
- ▶ Chromasens SDK with real time kernel for reliable high speed image capture under Windows

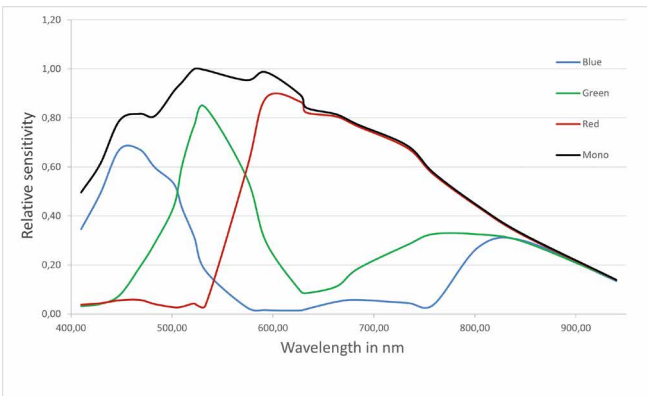




APPLICATIONS:

- Flat Panel Display
- Printed Circuit Board
- High-resolution Document Scanning
- Print
- Web
- Quality Control
- Sorting Processes
- High Quality Surface
- Food
- Semiconductor
- General machine vision

SPECTRAL SENSITIVITY:



SPECIFICATIONS:

Sensor	Trilinear CMOS line scan sensor for color or mono
Number of pixels	10240 pixels 15360 pixels
Active pixel size	5.6 µm x 5.6 µm
Output	Single/Dual 10 GigE GigE Vision® 2.0 compliant
Max. line rate color	RGB: 10240 x 3 pixels: up to 40 kHz (Single)* RGB: 10240 x 3 pixels: up to 68.4 kHz (Dual)* RGB: 15360 x 3 pixels: up to 26 kHz (Single)* RGB: 15360 x 3 pixels: up to 49 kHz (Dual)*
Max. line rate mono	Mono: 10240 x1 pixels: up to 68.4 kHz (Single and Dual)* Mono: 15360 x1 pixels: up to 68.4 kHz (Single and Dual)*
Max. line rate in ROI mode	RGB and mono: up to 68.4 kHz ¹
Data format	3 x 8/10/12 Bit color or 1 x 8/10/12 Bit mono mode
TDI	up to 3 x TDI mode (TDI camera model - mono)
Interfaces	2 x SFP+ External I/O (DSUB)
Power supply	12 – 24V DC ± 20%
Trigger mode	Free run / External trigger Line trigger / Frame trigger
Operating Temperature	0° - 60°C (housing temperature)
Dimensions / Lens mount	10K: 102 x 76 x 82 mm (W x H x D) / M72 x 0,75 mm 15K: 102 x 101 x 82 mm (W x H x D) / M 95 x 1mm
Certifications	CE; RoHS

*With Chromasens SDK. For more information see allPIXA evo manual.

Customized Cameras and Imaging Systems:

Chromasens offers fully customized light, camera and scanner solutions. All systems are 100% adaptable to customer requirements.